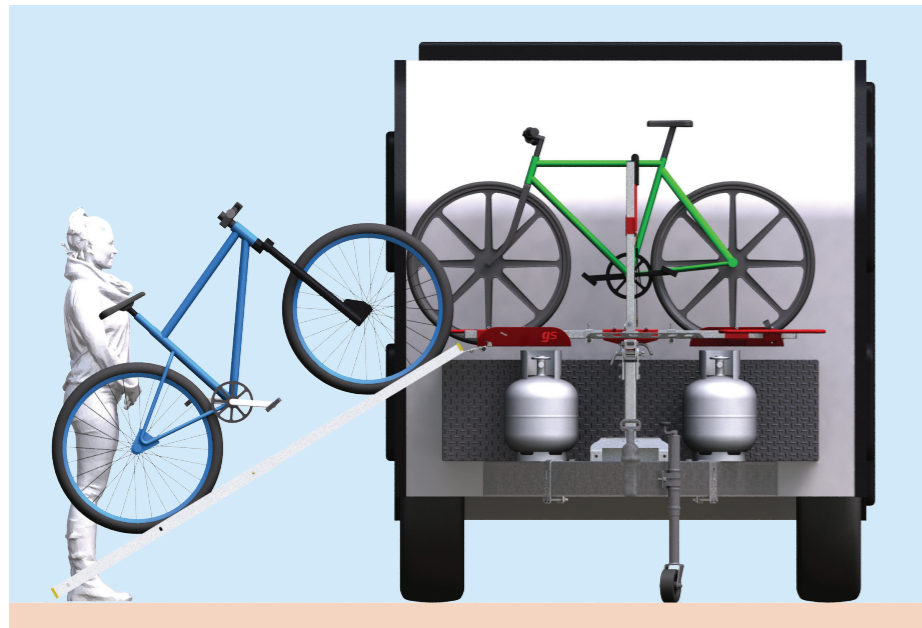


# Loading Ramp - Van Rack & GS-Adventure

**gripsport**

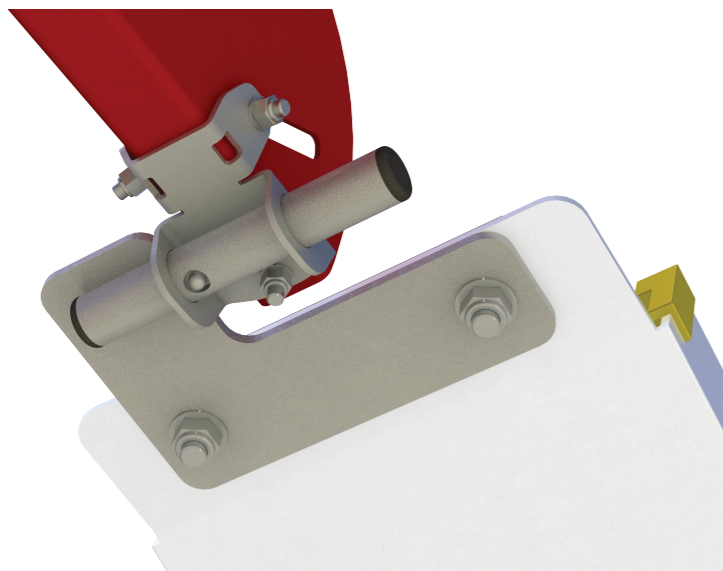
## Ramp



### Lightweight aluminium ramp:

- Telescoping sections expand up to 2.1m long
- Snap-buttons adjust ramp to 3 lengths
- Wide section ensures stable footing at ground
- High-grip track for safe loading/unloading

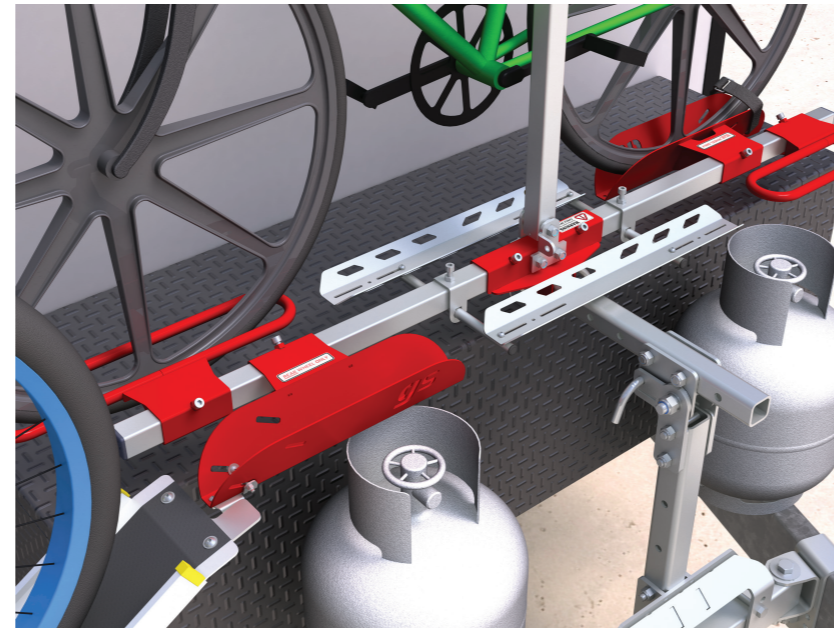
## Coupling



### Safe & Hassle-free:

- Effortless Ramp Prong connection
- Securely engages with Snap Button
- Maximum safety and ease, always!

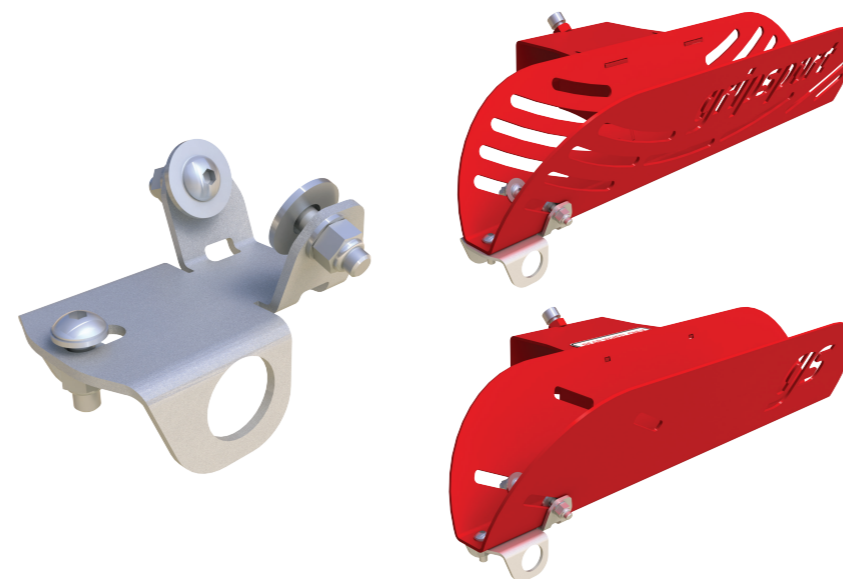
## Bridge



### Direct fit onto existing carriers:

- Bridging Tracks span between Taco & Hoop
- Adjustable position
- Compatible with Rack Light on GS-Adventure vehicle fitted racks.

## Knuckle



### Compact & Versatile:

- Multi-fit, easy bolt-on assembly
- Allows full use with Cinch Straps
- Taco protected from wear and tear



## Loading Ramp

### Avoid lifting bikes!

- Easily roll your bike onto the carrier
- Safe connection with interlock button
- Stable if parked hillside

### Convenient:

- Lightweight, expanding aluminium ramp
- Pivoting ramp connection for high/low use
- Also suitable for use on vehicle mounts

### Easy:

- Compliments your current Van Rack
- Suits current & previous generation Tacos
- Adjustable Bridge to suit your set-up

### Durable:

- No wear to carrier over time
- Ramp attaches with dedicated steel knuckle
- GripSport quality manufacture for years of use

**Bike Racks. Built Tough.**